

VIRO[®]

INFINITE POSSIBILITIES



WEAVING PATTERN CATALOG



We Are Your #1 Tropical Architecture Specialist. We Provide 100% Recyclable, Strongly Durable, and Highly Customizable, Eco-Friendly Materials.

INTEGRITY

PT. Polymindo Permata, launched as a brand Viro in 1998, is based in Indonesia and has gained a global market of furniture and tropical building industry in manufacturing new developed material all-weather wicker and thatch.

TECHNOLOGY

We intend to draw a powerful line between craftsmanship and technology to full satisfaction of our customers.

SUSTAINABILITY

We understand that synthetic material industry can have a profound social and ecological impact. We always had a vision for the company that went beyond establishing a business.



MODERN

Science & Technology are the basis of our operations. However, we do not solely rely on the the latest discoveries and break through. All of our processes are involving highly trained and skilled professionals with their human touches and senses.

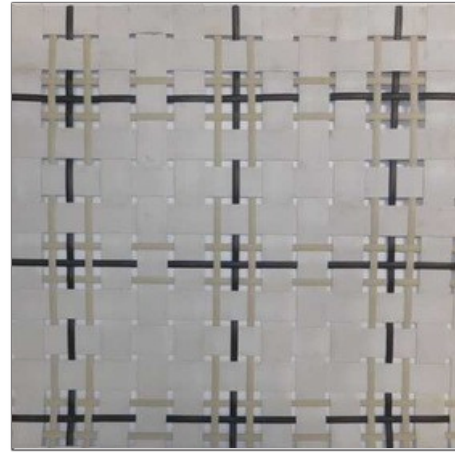


VIRO



A7466

VIRO



S0121

VIRO



A7284

VIRO



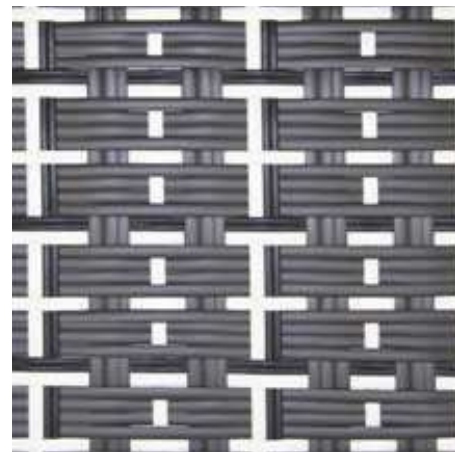
S0130

VIRO



S0122

VIRO



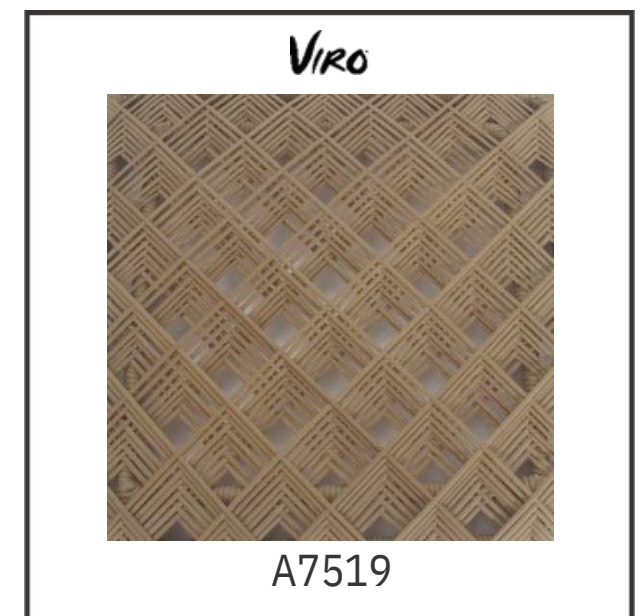
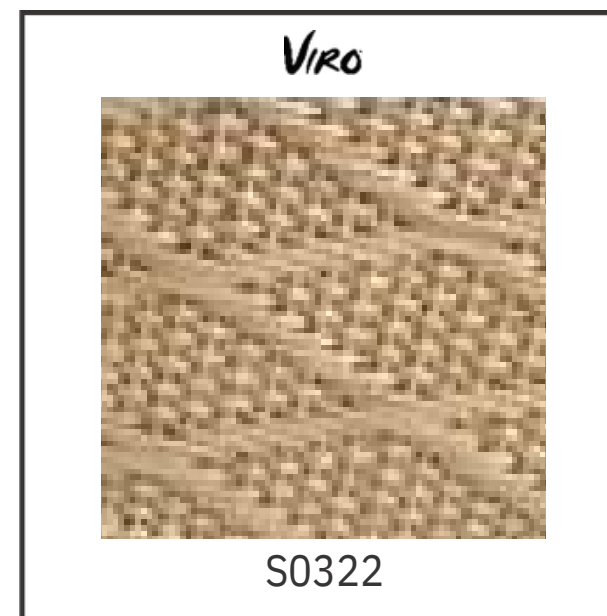
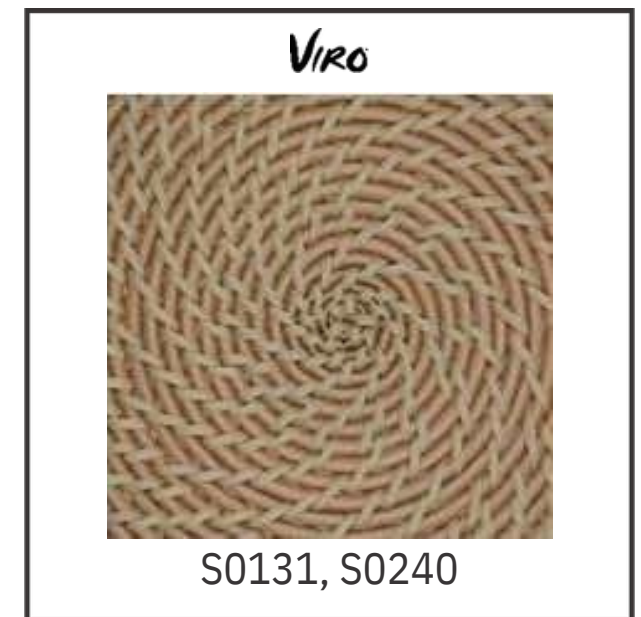
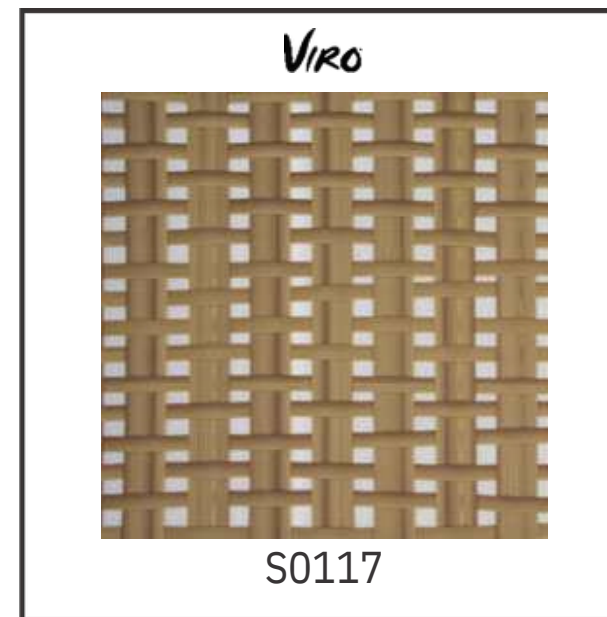
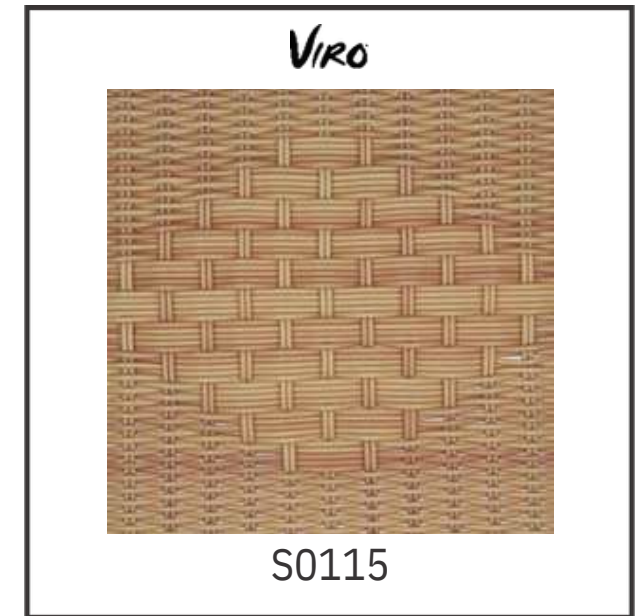
S0123



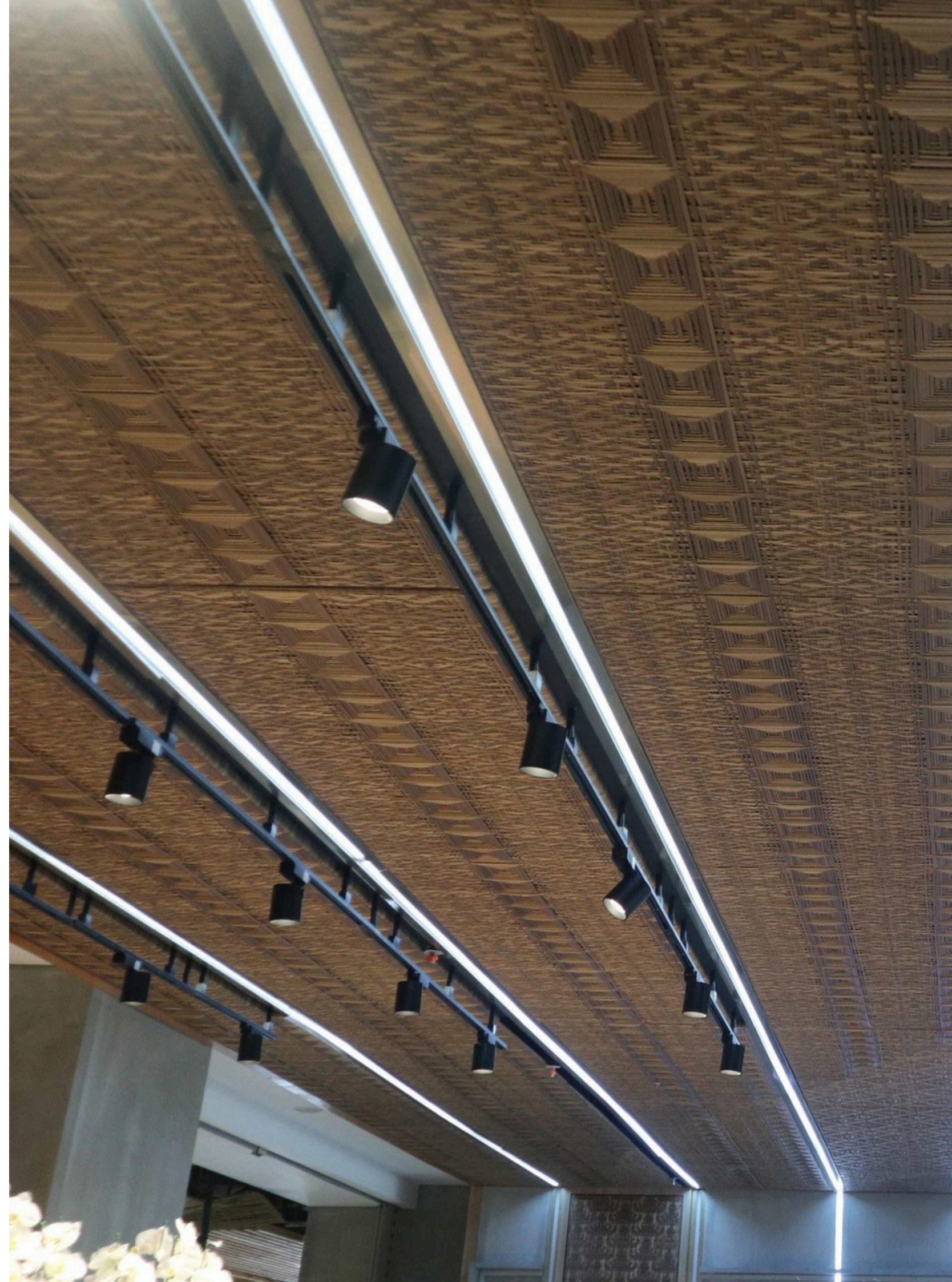
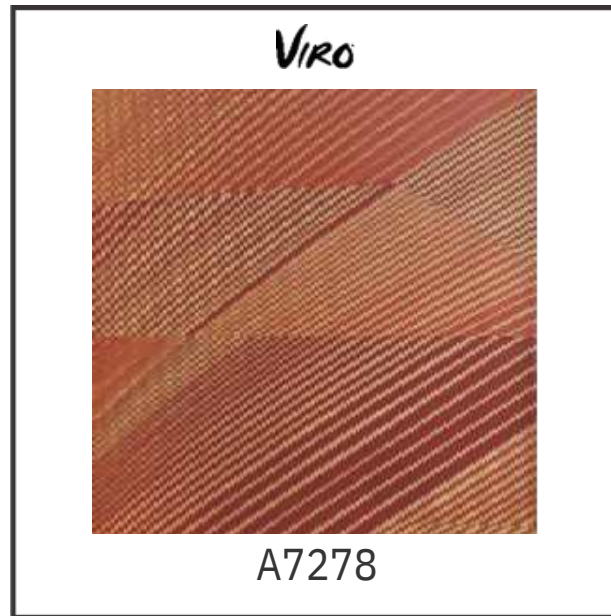
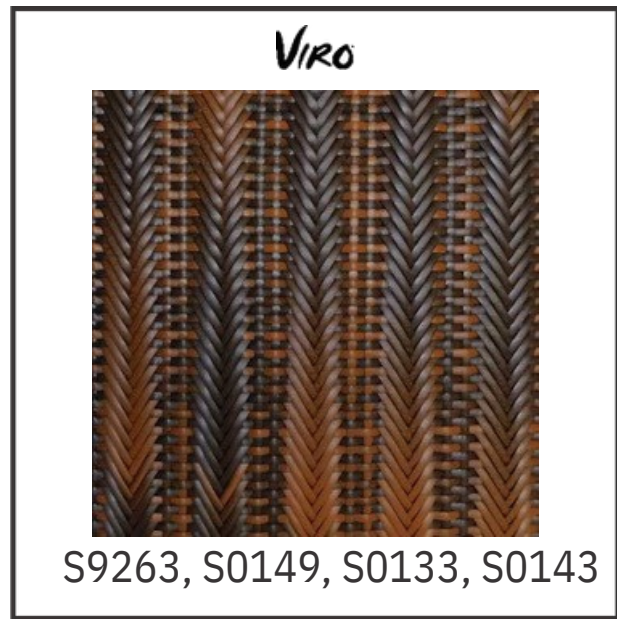
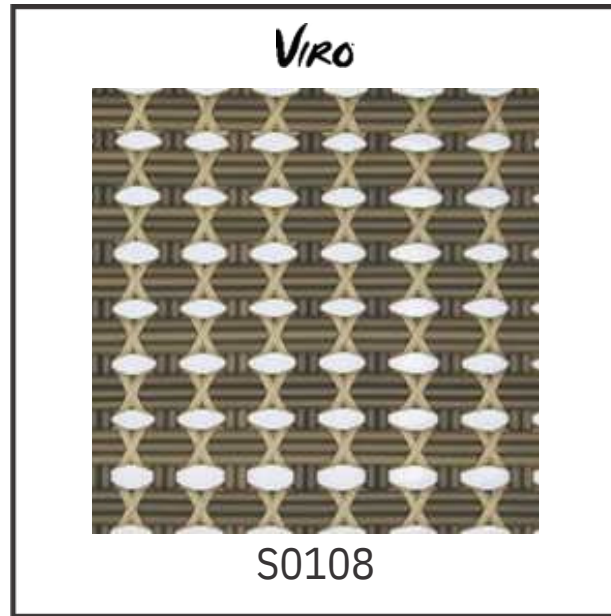
KONTEMPORER

Above weaving pattern can be use for Surface, Surface with Backing, Archinering, Partisi.
For another applicable please contact us.

For another applicable please contact us.



Above weaving pattern can be use for Surface, Surface with Backing, Archinering, Partisi.
For another applicable please contact us.

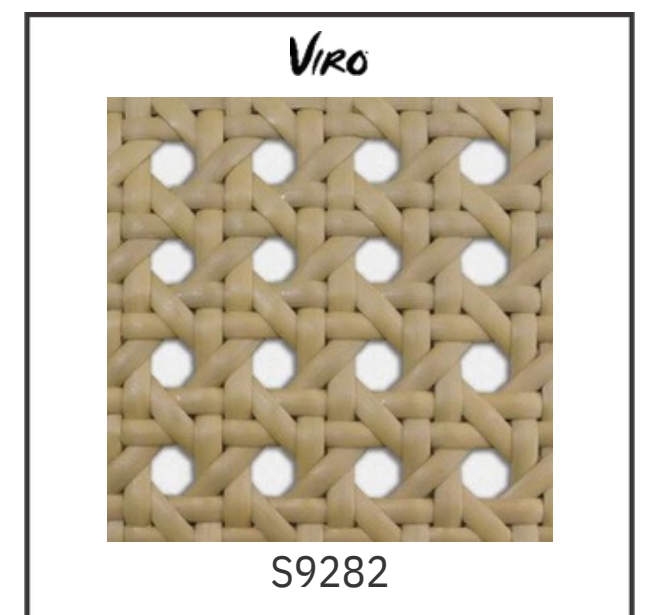


Above weaving pattern can be use for Surface, Surface with Backing, Archinering, Partisi.
For another applicable please contact us.

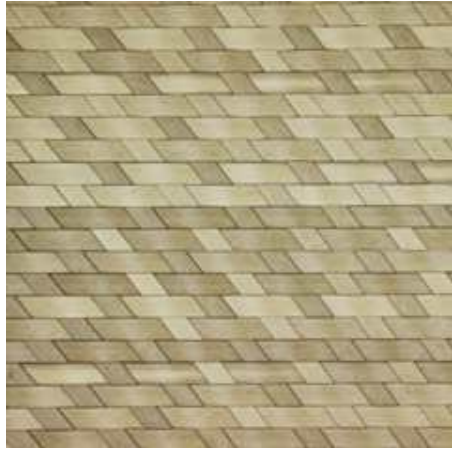
CLASSIC

CLASSIC

Our rich culture and heritage continuously inspires us. VIRO implements traditional Indonesian weaving wisdom and expertise into our product range. While preserving traditions and culture, we are unique value and proportions.



VIRO



S0116

VIRO



S0024, S0024, S0014

VIRO



S0041

VIRO



S0081, S0241

VIRO



S0033, S0031, S0067, S0068

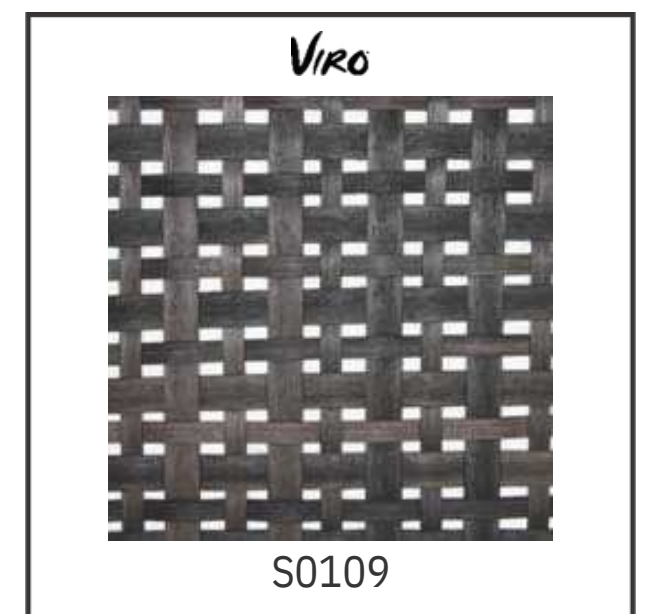
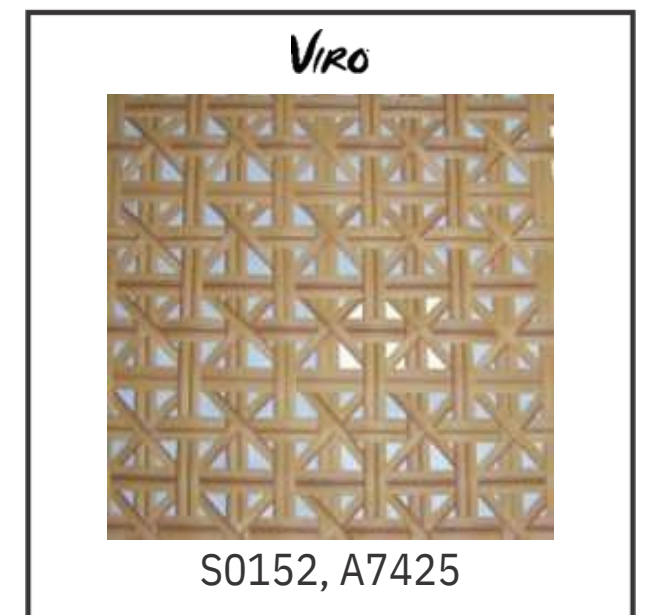
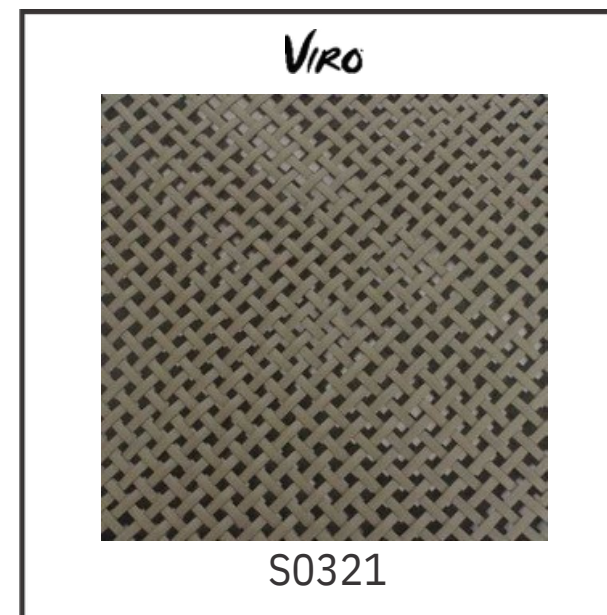
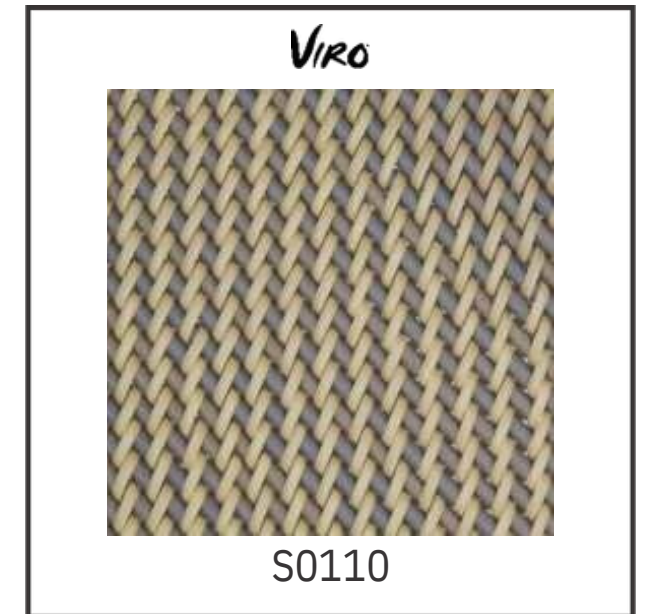
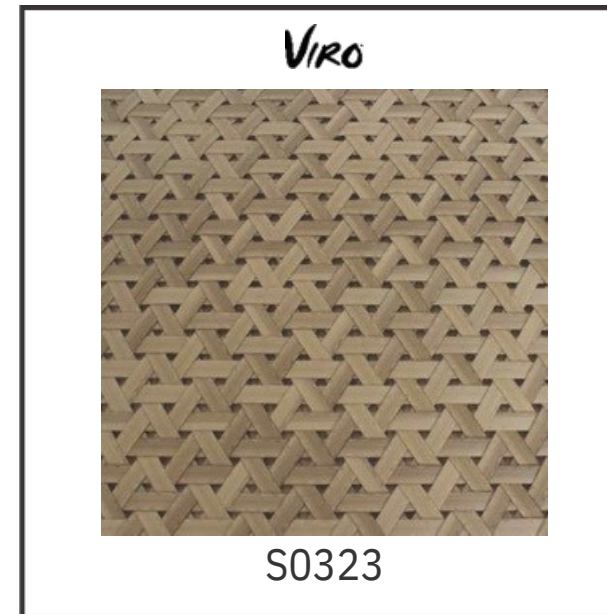
VIRO



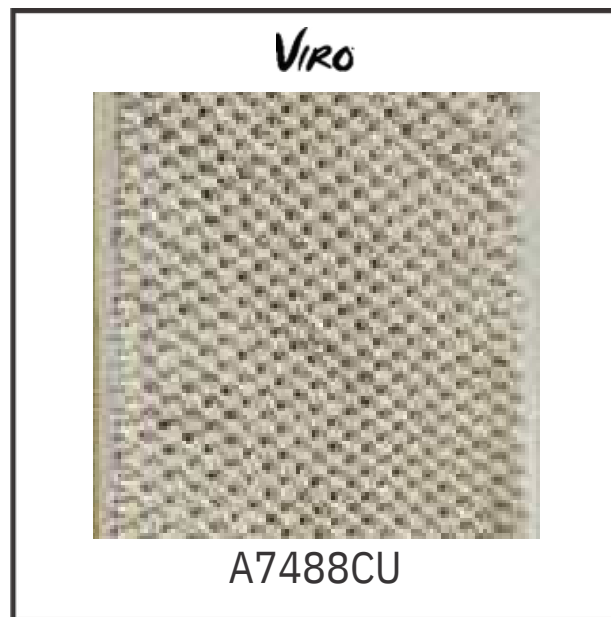
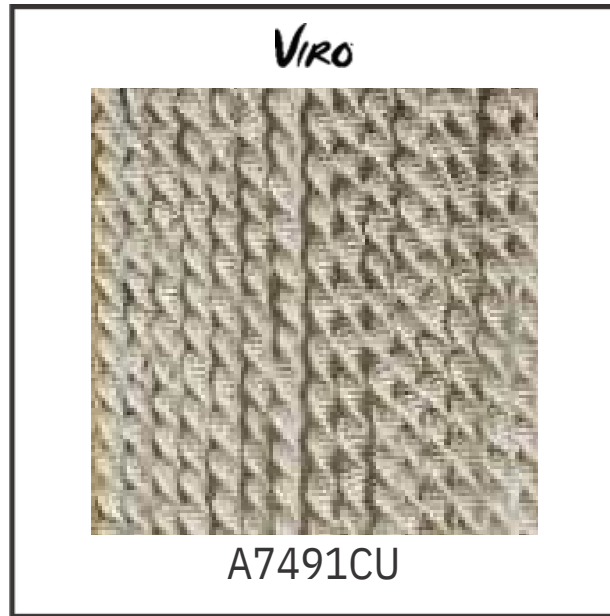
S0026, S0016, S0032

Above weaving pattern can be use for Surface, Surface with Backing, Archinering, Partisi.
For another applicable please contact us.





Above weaving pattern can be use for Surface, Surface with Backing, Archinering, Partisi.
For another applicable please contact us.



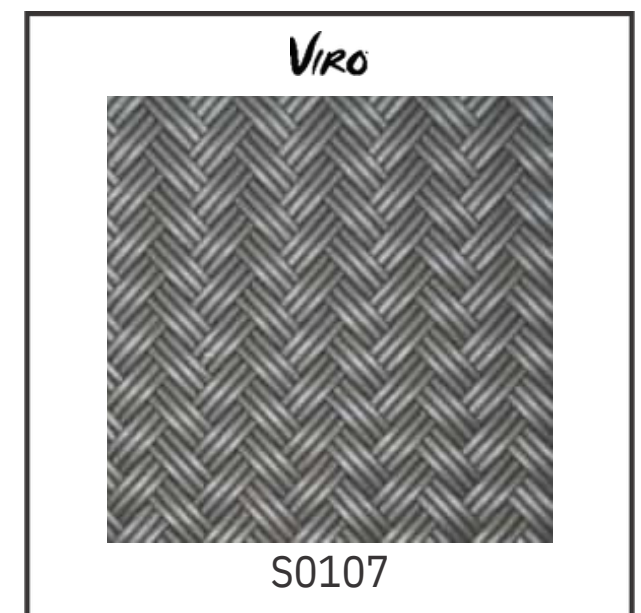
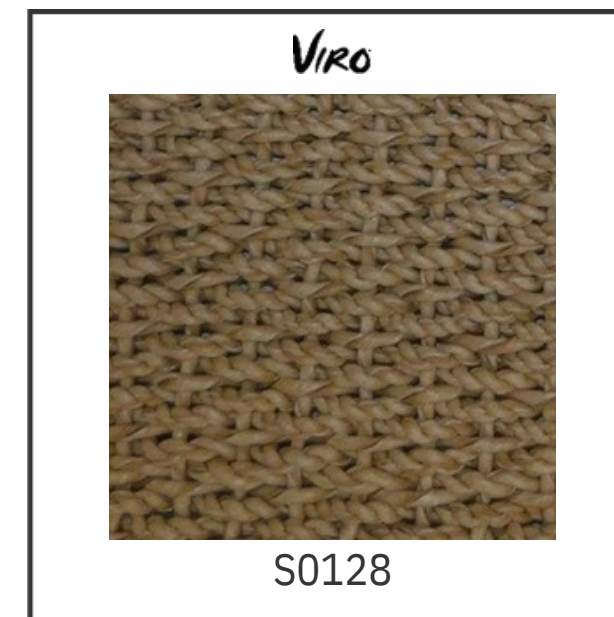
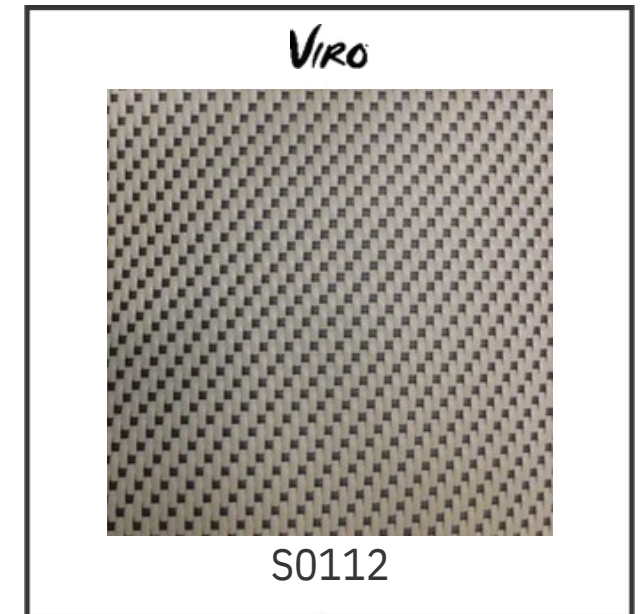
Above weaving pattern can be use for Surface, Surface with Backing, Archinering, Partisi.
For another applicable please contact us.



ARTISTIC

Our meticulous processes are resulting in different product characteristics are based on different formulation. We products that are suitable for all conditions. We can also customized products specifically to your need.





Above weaving pattern can be use for Surface, Surface with Backing, Archinering, Partisi.
For another applicable please contact us.

VIRO



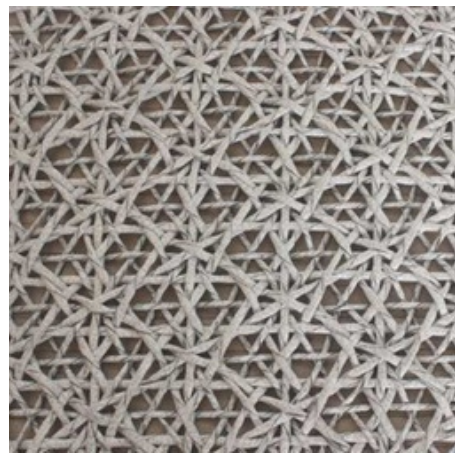
S9262

VIRO



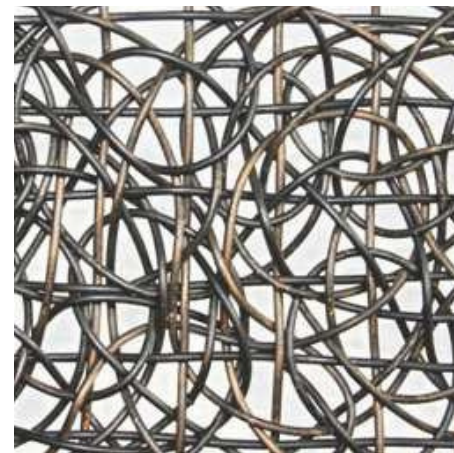
A7511

VIRO



A7404, A7418

VIRO



A7427

VIRO



A7494CU

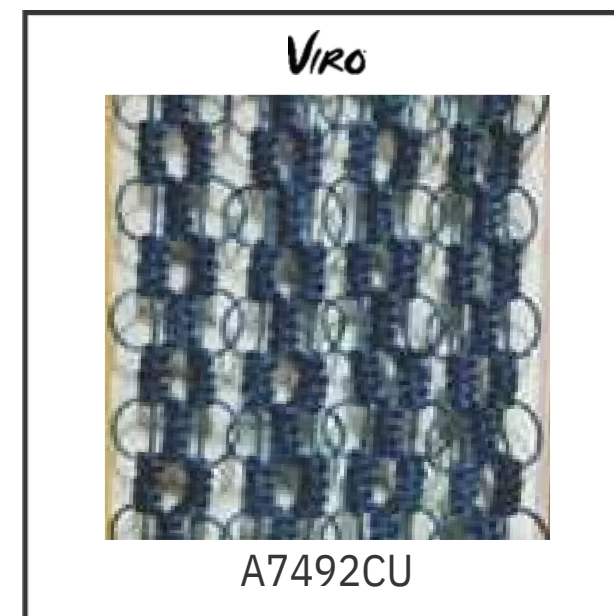
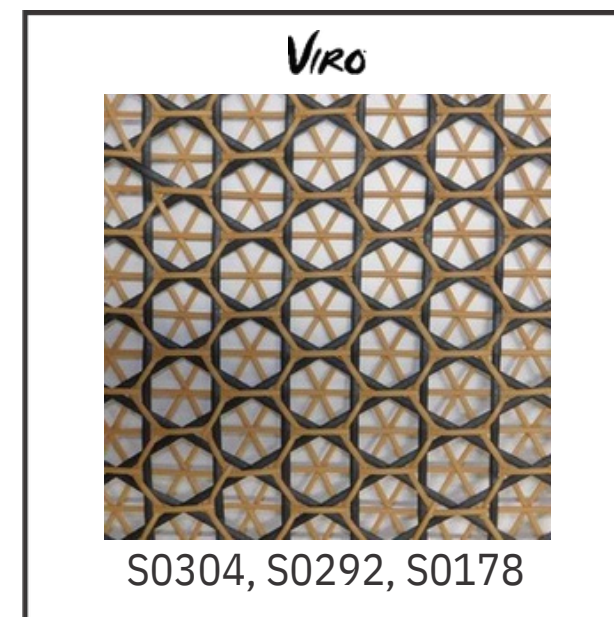
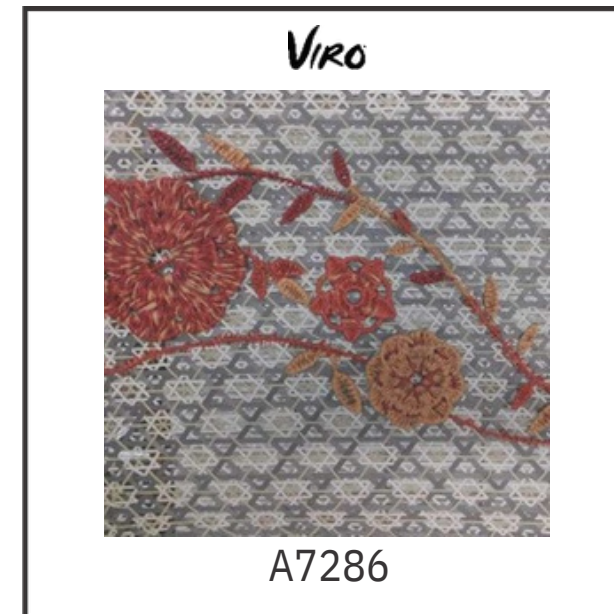
VIRO



S0132



Above weaving pattern can be use for Surface, Surface with Backing, Archinering, Partisi.
For another applicable please contact us.



Above weaving pattern can be use for Surface, Surface with Backing, Archinering, Partisi.
For another applicable please contact us.

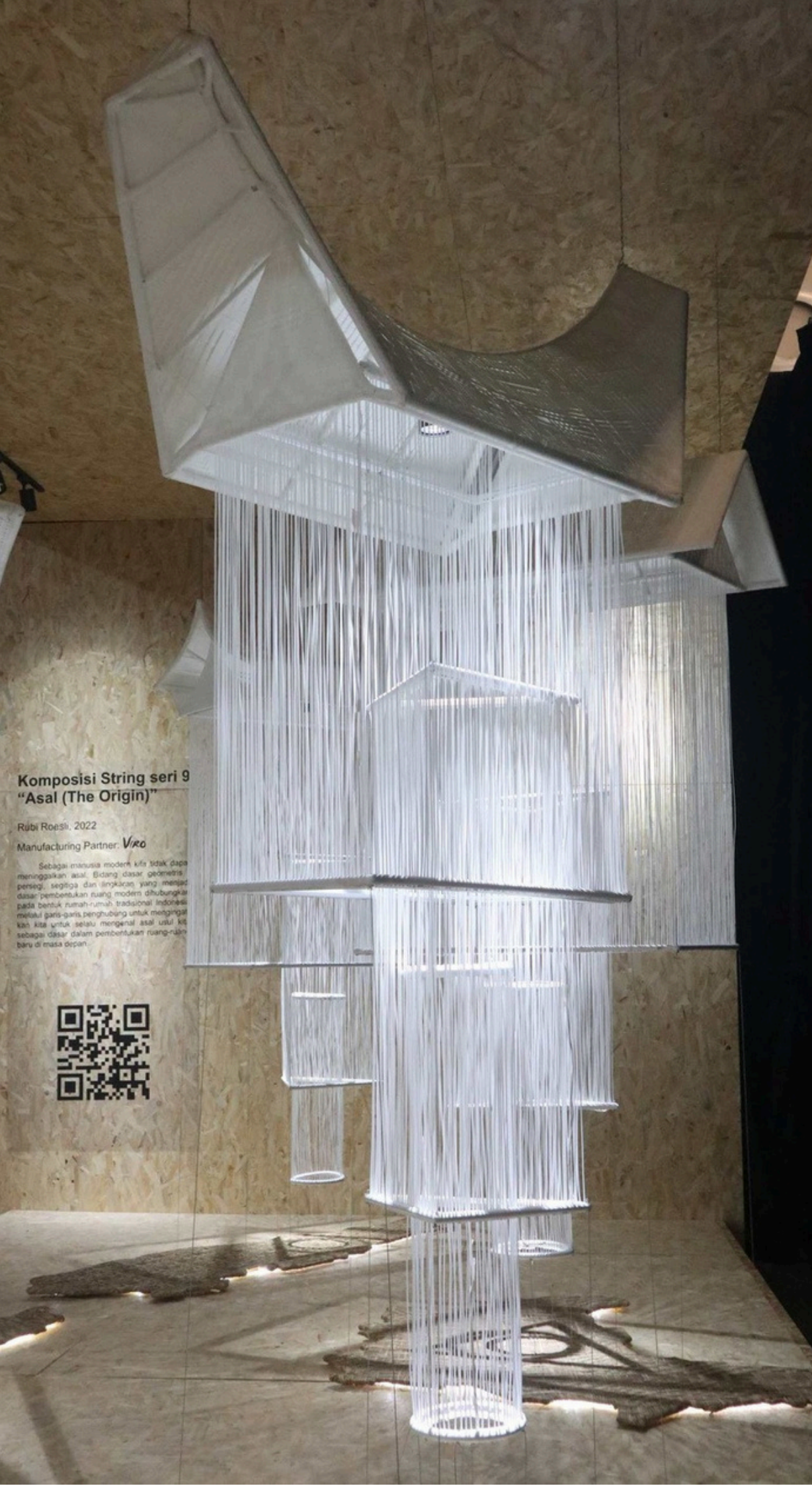


SPECIAL PROJECT

String Composition #9 : THE ORIGIN (Asal)

Rubi Roesli, 2022

Viva



“Strings of Wonder”

Rubi Roesli argues, “As modern humans we can’t deny our origin” . Squares, triangles and circles that form the basis of modern spaces are connected to the shape of traditional Indonesian houses through connecting lines. In this masterpiece creation, Roesli want to remind us that our origins are the foundation our future spaces. As the manufacturing partner of this artful structure, VIRO is thrilled that this work won the Top Prize at the National Architecture Installation Festival 2022 (NAIFEST 2022)



SPECIAL PROJECT

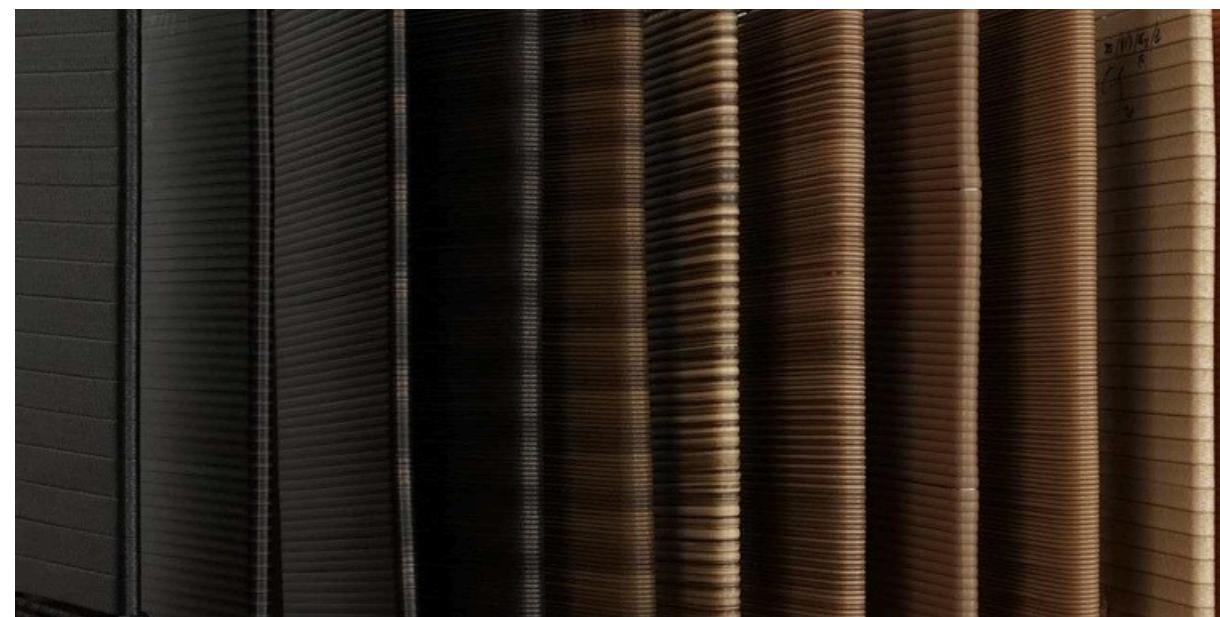
**VXKK Flower Dome
& VXKK Art Thatch Panel**

Kezia Karin
Studio, 2021



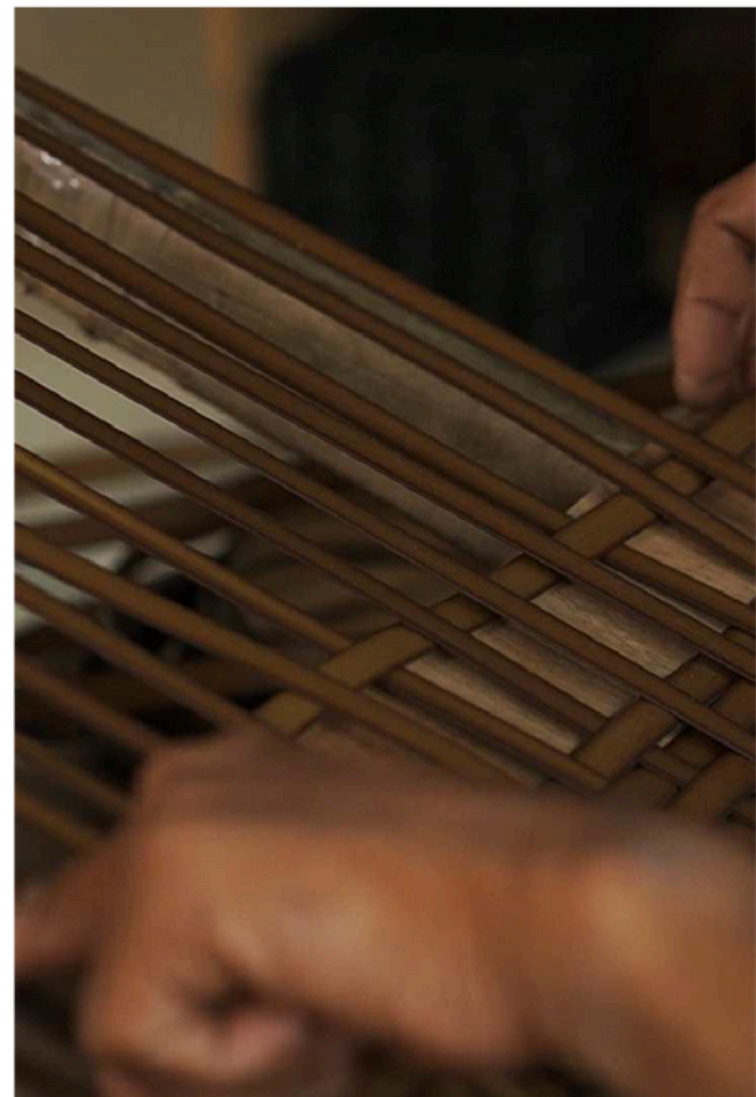
“The Beauty of Dichotomy”
VXKK Flower Dome mystified Indo Build Tech 2022 visitors by its intricate marvels and design. This beautiful and powerful structure will live on as another testament to the wonderful collaboration between VIRO and Kezia Karin Studio. We also introduce VXKK Art Thatch Panels that perfectly and dramatically transform space and mood to both futuristic and jurassic state of mind. This juxtaposing dichotomy lead VIRO to receive Best Booth Award in IBT2022.





PROCESS

Meticulously handmade in Indonesia. VIRO is now the world's market leader for all-weather handwoven wicker surface. All of our making processes involve skilled professionals with their human touches and senses. From our science labs, our weaving experiments center, to our manufacturing processes, are all harmonizing craftsmanship with technologies

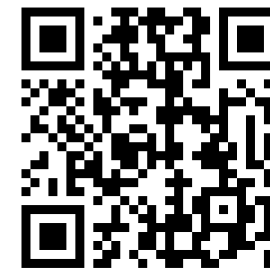




HORESTCO

Jalan Mantingan, Desa Langon RT 12 RW 05, Kecamatan Tahunan,
Kabupaten Jepara, Central Java, 59425, INDONESIA

MORE CATALOGUE



export@horestco.com

www.horestco.com

628551065899
